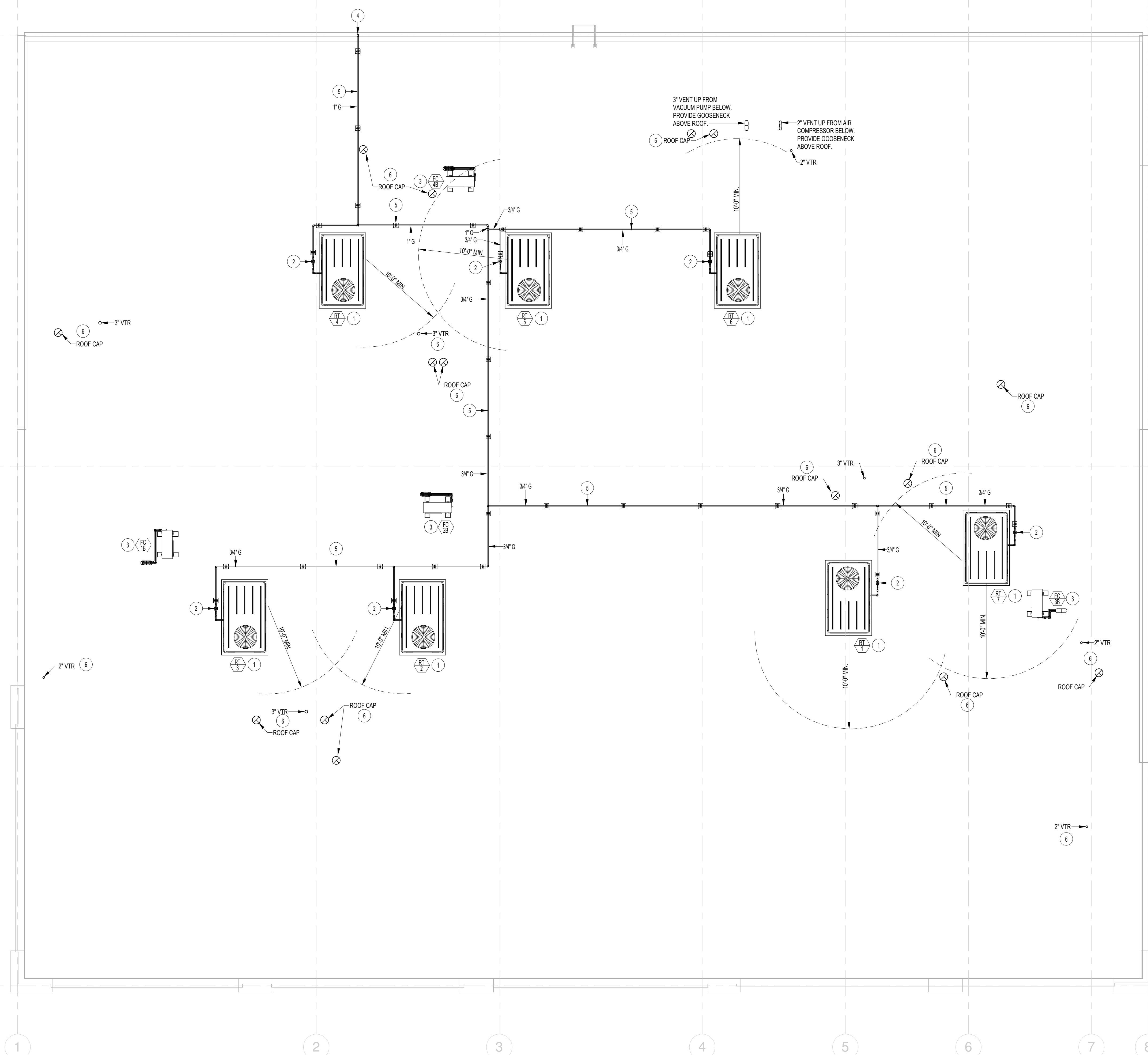


A

B

C



PLAN NOTES:

- 1 ROOF TOP HVAC UNIT INSTALLED BY MECHANICAL CONTRACTOR. PLUMBING CONTRACTOR TO COORDINATE UNIT LOCATION WITH PLUMBING VENTS. VENT ARE TO BE 10'-0" MINIMUM AWAY FROM ANY EQUIPMENT AIR INTAKE AS REQUIRED BY CODE.
- 2 CONNECT 3/4" GAS LINE (2 PSI) TO ROOF TOP EQUIPMENT WITH PRESSURE REGULATOR, SHUT-OFF VALVE, DRIP LEG, UNION FITTING AND FLEXIBLE HOSE. REFER TO DETAIL JPS.1 FOR TYPICAL GAS LINE CONNECTION TO ROOF MOUNTED EQUIPMENT.
- 3 MINI-SPLIT EQUIPMENT AND PIPING INSTALLED BY MECHANICAL CONTRACTOR. PLUMBING CONTRACTOR TO COORDINATE UNIT AND PIPING LOCATIONS WITH PLUMBING VENTS. DO NOT RISE PLUMBING VENTS UP NEAR EQUIPMENT OR PIPE PENETRATION THRU ROOF.
- 4 RISE 1" GAS LINE (2 PSI) UP WALL TO ROOF LEVEL. REFER TO SHEET P1.1 FOR LOCATION OF GAS METER. SECURE PIPING TO EXTERIOR WALL WITH UNISTRUCT PIPE SUPPORTS SPACED AT 6'-0" ON CENTERS.
- 5 RUN GAS PIPING ON ROOF WITH 'PILLOW' TYPE PIPE SUPPORTS. PIPING TO FOLLOW SLOPE OF ROOF. COORDINATE PIPING ROUTES WITH ROOF MOUNTED EQUIPMENT, OTHER PIPING AND EXHAUST ROOF CAPS. MINIMUM SIZE OF GAS PIPING IS 3/4".
- 6 COORDINATE LOCATION OF GAS PIPING AND PLUMBING VENTS WITH EXHAUST ROOF CAPS. MAINTAIN A 10'-0" MINIMUM DISTANCE BETWEEN ANY EXHAUST OUTLET ON ROOF OR PLUMBING VENT TO ANY EQUIPMENT AIR INTAKE AS REQUIRED BY CODE.

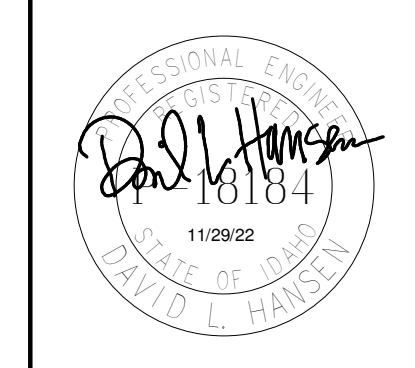
12/2/2022

DATE:

A NEW FACILITY FOR;
FAMILY HEALTH SERVICES
 SHOSHONE, IDAHO
PLUMBING ROOF PLAN

Laughlin Ricks Architecture
 architecture/planning
 935 Shoshone Street North * Twin Falls, Idaho 83301
 (208) 736-8050 Fax: (208) 733-0950

1 PLUMBING ROOF PLAN
 3/16" = 1'-0"



Engineered Systems Associates
 1395 EAST CENTER
 ROCATELLO, IDAHO 83201
 PHONE: (208) 233-0501
 FAX: (208) 233-0529
 EMAIL: esa@engsystems.com
 ESA JOB NUMBER: 22042

DATE: 12/2/2022

MLJ DLH
 Drawn Checked

P2.1